

Test Report No. EWA30067-01T2

Transmission Performance Testing:

according to ISO/IEC 11801 Edition 2 (09/2002)
Channel Klasse E

The Equipment Under Test (EUT)

Part 1:	J00091A0007 Single Module OCS Cat.6
Part 2:	J00091A0007 Single Module OCS Cat.6
Part 3:	L00003A0049 (2x) TG Measuring Cable Cat. 6 - 5m (2x)
Part 4:	M06015A0079 (2x) Microtest Omniscanner 2 Channel Adapter Cat. 6
Installation Cable:	Kerpen Megaline 723 90m

Result:

The EUT has been verified as being compliant with the transmission specifications of the standard ISO/IEC 11801 Edition 2 (09/2002).

The minimum NEXT reserve of the Channel Class E is:
@100 MHz = 8,9 dB and @ 250 MHz = 2,0 dB.

Test location:

Telegärtner Karl Gärtner GmbH
Lerchenstrasse 35
7144 Steinenbronn / Germany
Telefon: +49 7157 / 125 - 118 Fax: +49 7157 / 125 - 120
e-mail: frank.albert@telegaertner.com

Tested by:



Frank Albert

Steinenbronn, March 31, 2003

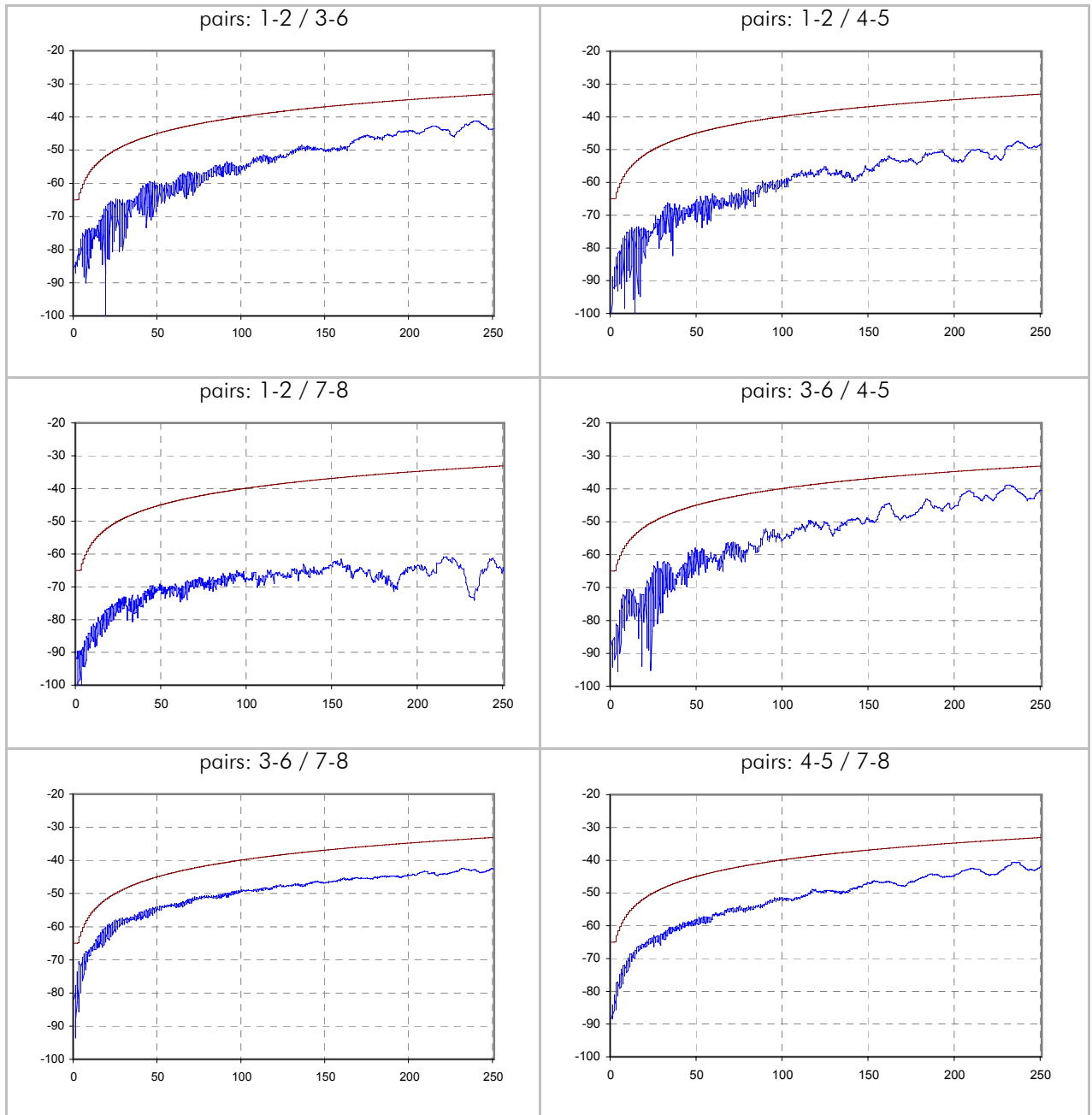
Test Results

pairs	1-2	3-6	4-5	7-8	limit	skew / ns	limit
max Propagation delay / ns	415,0	414,0	416,0	418,0	546,3	4,0	50,0
Attenuation @ 100 MHz / dB	-18,3	-18,4	-18,3	-18,3	-21,7		
Attenuation @ 250 MHz / dB	-29,8	-30,2	-29,3	-29,7	35,9		
min PSNEXT margin / dB	4,4	2,4	5,6	7,9			
@ f / MHZ	249,7	250,1	250,1	234,4			
PSNEXT limit / dB	-30,2	-30,1	-30,1	-30,6			
PSNEXT @ 100 MHz	-48,3	-44,9	-49,5	-47,3	-37,1		
PSNEXT @ 250 MHz	-34,6	-32,6	-36,0	-39,0	-30,2		
min PSELFEXT margin / dB	12,7	4,5	4,4	19,8			
@ f / MHZ	221,8	1,0	1,0	239,8			
PSELFEXT limit / dB	-13,3	-60,6	-60,6	-12,7			
PSELFEXT @ 100 MHz	-35,2	-25,6	-25,4	-41,4	-20,3		
PSELFEXT @ 250 MHz	-25,5	-17,5	-18,2	-35,7	-12,3		
min PSACR margin / dB	10,2	8,0	11,8	9,6			
@ f / MHZ	248,8	250,1	231,7	3,9			
PSACR limit / dB	-5,6	-5,8	-3,7	56,6			
PSACR @ 100 MHz	34,9	29,1	31,3	30,3	15,4		
PSACR @ 250 MHz	12,7	7,1	8,7	9,7	-5,7		
min Return Loss margin / dB	3,6	4,5	3,6	4,2			
@ f / MHZ	2,8	2,6	2,5	2,8			
Return Loss limit / dB	-19,0	-19,0	-19,0	-19,0			

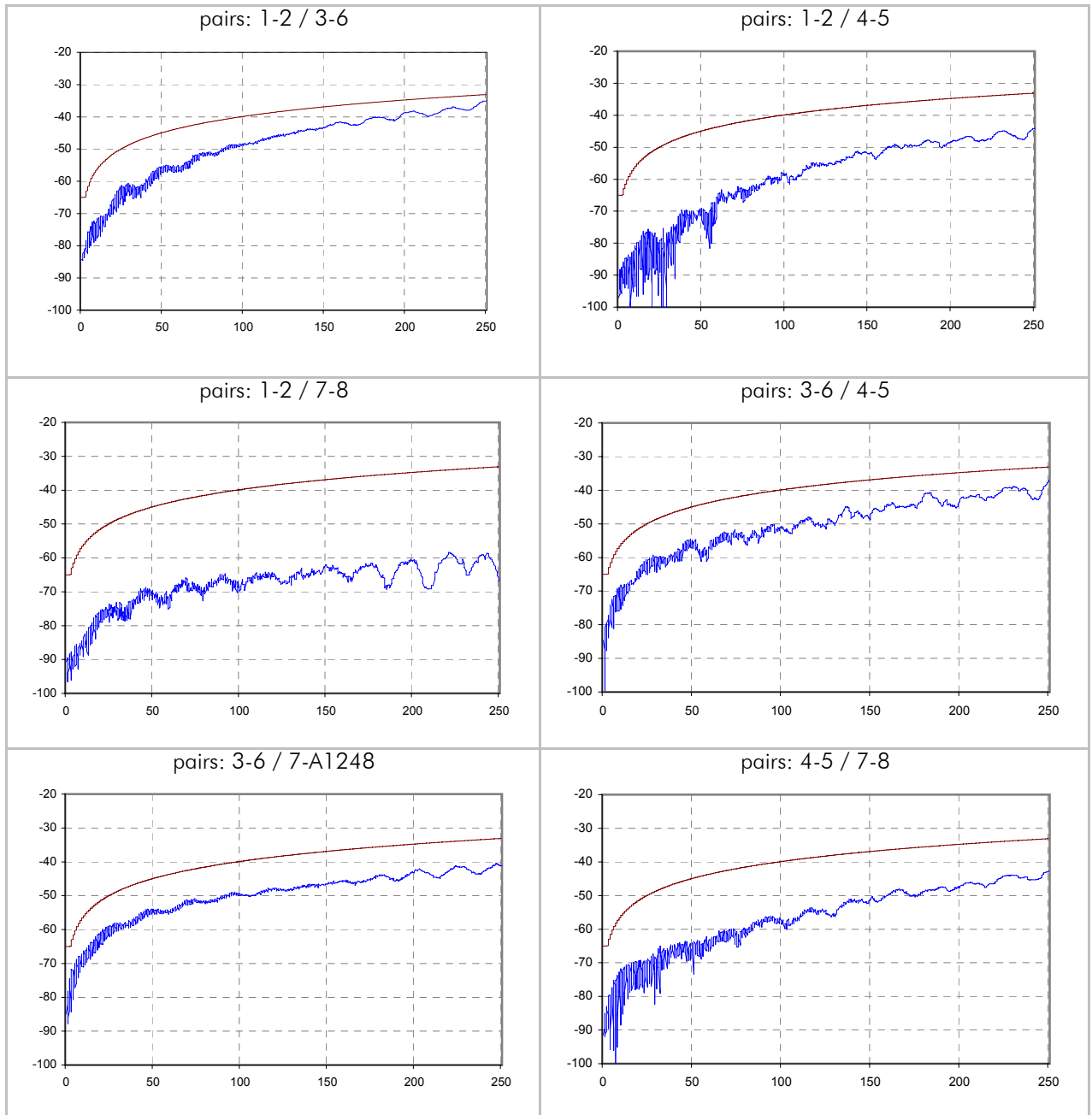
pairs	1-2 / 3-6	1-2 / 4-5	1-2 / 7-8	3-6 / 4-5	3-6 / 7-8	4-5 / 7-8	limit
min NEXT margin / dB	1,9	11,0	23,2	4,3	7,2	7,0	
@ f / MHZ	248,8	250,1	43,9	250,1	224,5	234,4	
Next limit / dB	-33,2	-33,1	-45,9	-33,1	-33,9	-33,6	
NEXT @ 100 MHz	-48,8	-58,3	-67,0	-51,2	-49,3	-51,5	-39,9
NEXT @ 250 MHz	-35,1	-44,2	-65,2	-37,8	-41,1	-42,3	-33,1
min ACR margin / dB	7,5	16,5	24,6	9,7	7,8	13,0	
@ f / MHZ	248,8	230,8	2,3	183,6	3,9	233,5	
ACR limit / dB	-2,7	-0,6	61,0	5,2	59,1	-1,0	
ACR @ 100 MHz	30,3	40,0	48,7	32,7	30,9	33,2	18,2
ACR @ 250 MHz	4,9	14,5	35,5	7,6	10,9	12,6	-2,8

pairs	3-6 / 1-2	4-5 / 1-2	7-8 / 1-2	4-5 / 3-6	7-8 / 3-6	7-8 / 4-5	limit
	1-2 / 3-6	1-2 / 4-5	1-2 / 7-8	3-6 / 4-5	3-6 / 7-8	4-5 / 7-8	
min ELFEXT margin / dB	12,0	10,9	21,5	1,6	22,9	18,1	
@ f / MHZ	247,0	247,0	1,0	1,0	238,0	214,6	
ELFEXT limit / dB	-15,4	-15,4	-63,6	-63,6	-15,7	-16,6	
min ELFEXT margin / dB	12,2	11,6	21,4	1,6	23,1	18,1	
@ f / MHZ	247,0	196,6	1,0	1,0	238,0	239,8	
ELFEXT limit / dB	-15,4	-17,4	-63,6	-63,6	-15,7	-15,7	
ELFEXT @ 100 MHz	-43,3	-36,1	-48,7	-25,6	-52,4	-42,5	-23,3
ELFEXT @ 250 MHz	-28,3	-27,4	-43,6	-17,6	-41,0	-37,3	-15,3
ELFEXT @ 100 MHz	-43,1	-36,0	-48,7	-25,7	-52,6	-42,6	-23,3
ELFEXT @ 250 MHz	-27,9	-27,8	-43,7	-18,5	-41,6	-36,9	-15,3

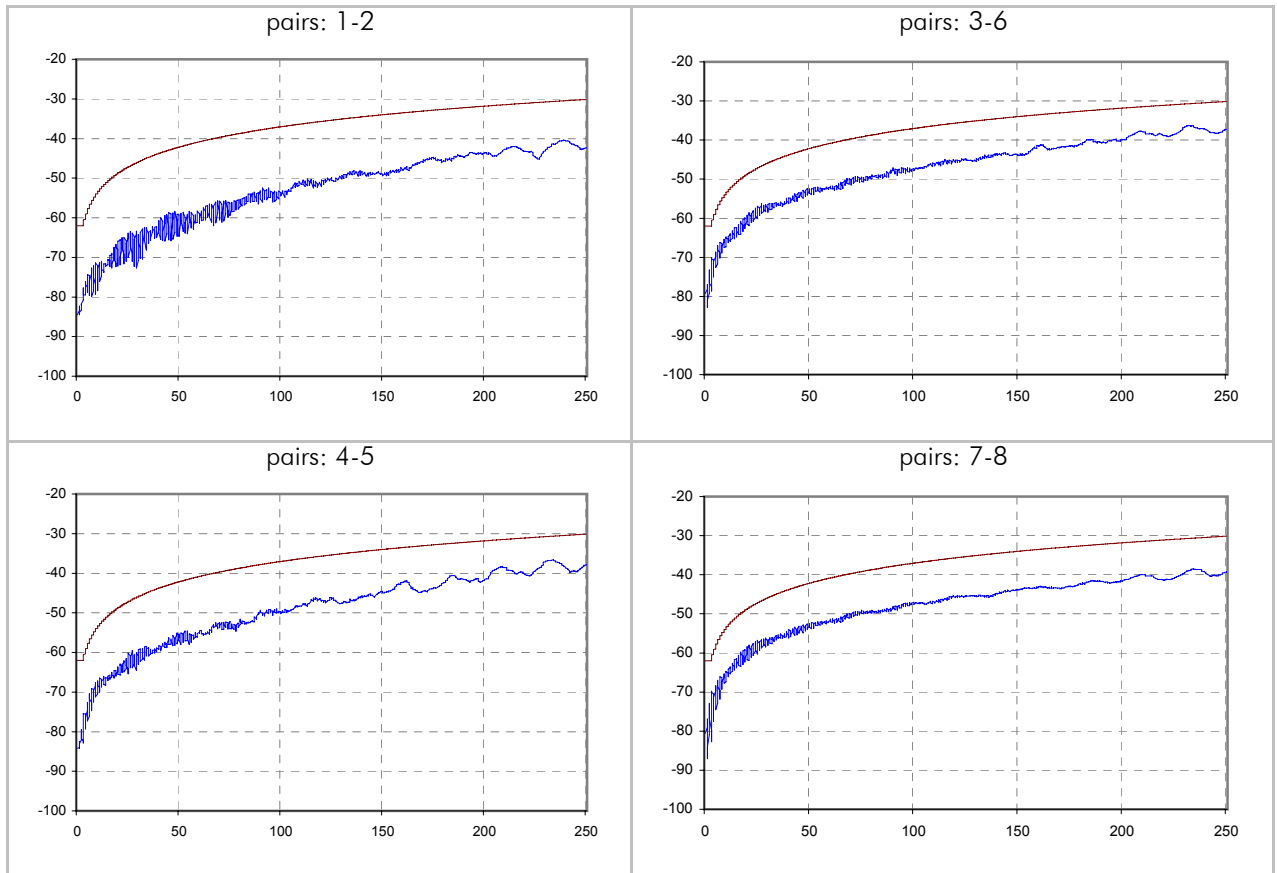
NEXT / dB (scanner side - type 1 side)



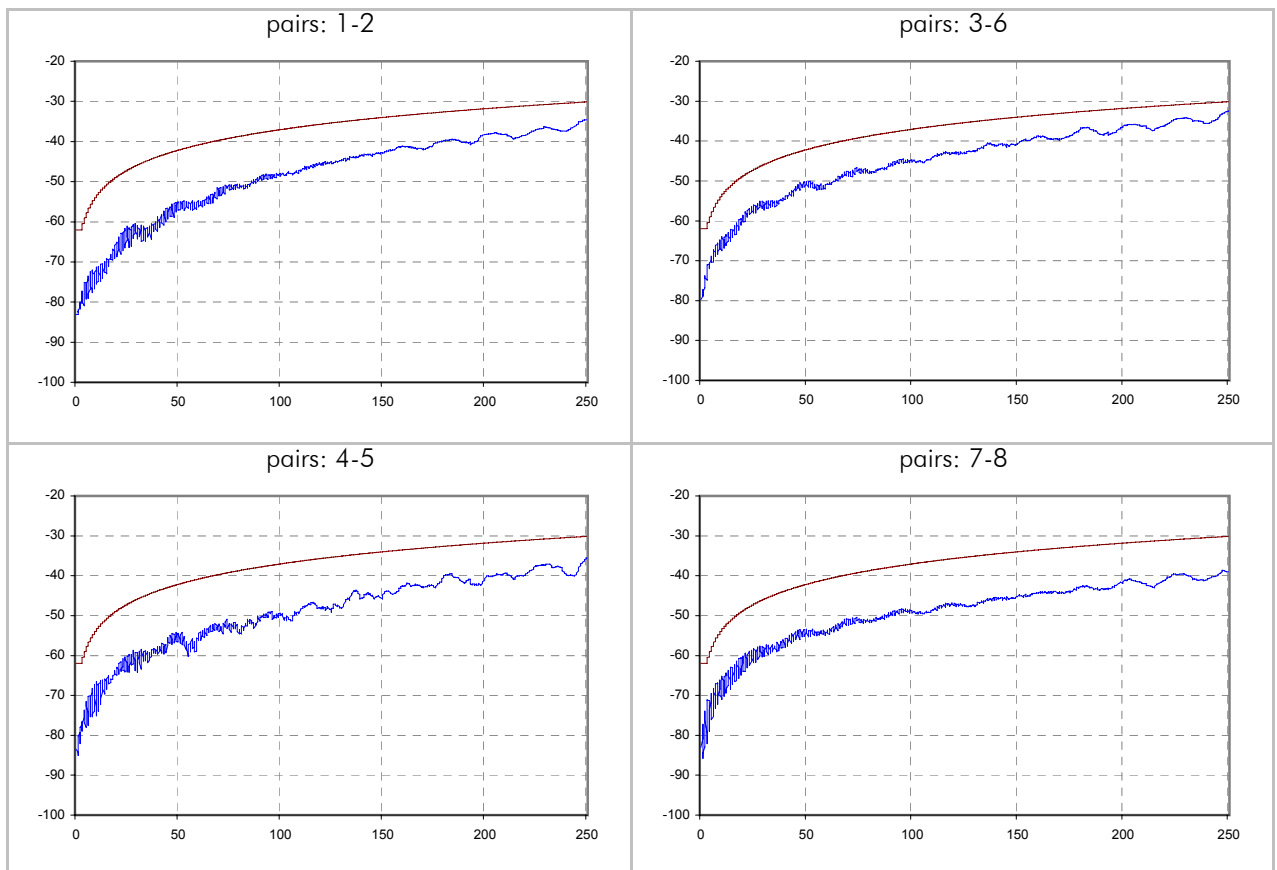
NEXT / dB (remote side - type 2 side)



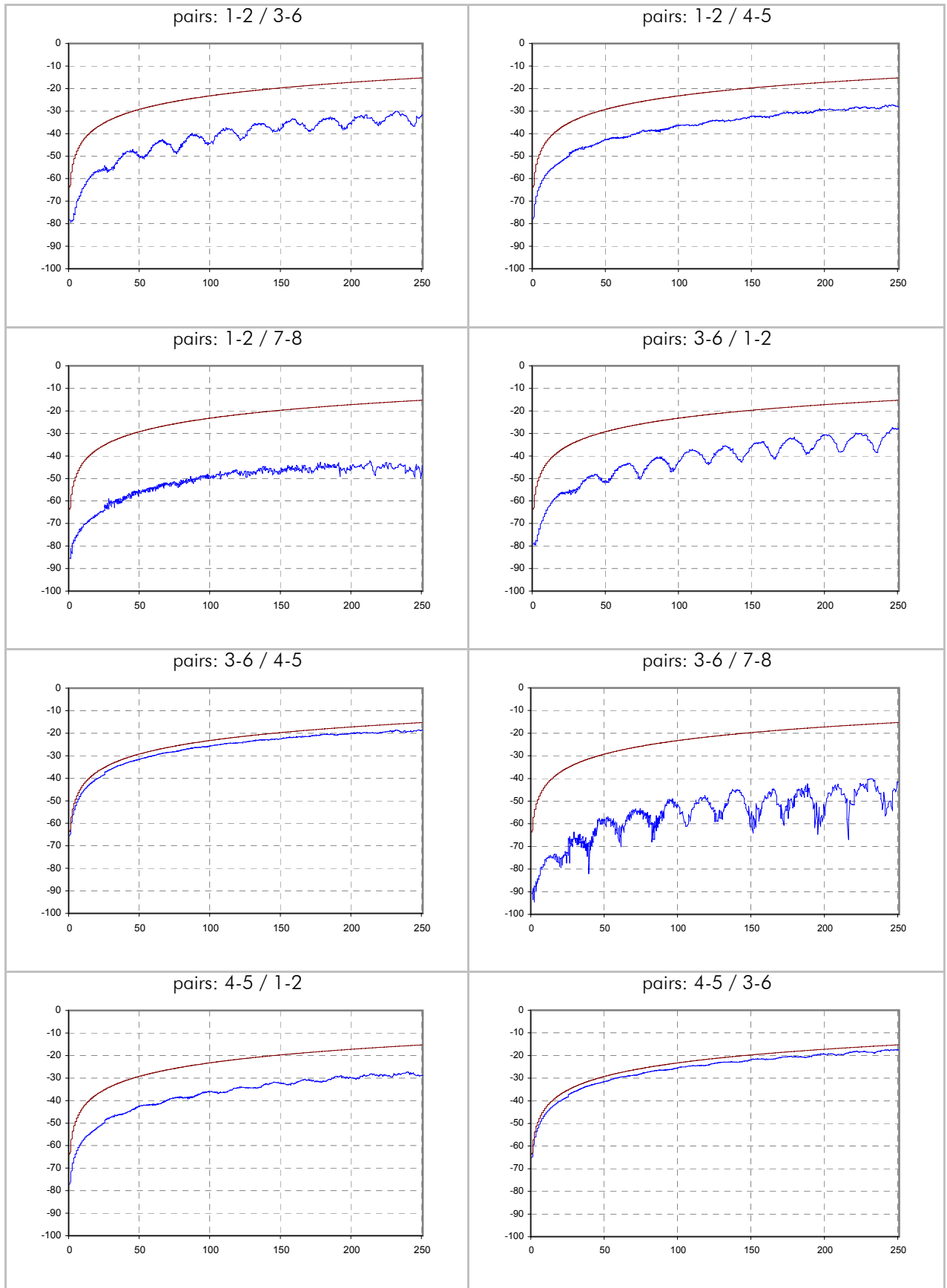
PSNEXT / dB (scanner side - type 1 side)



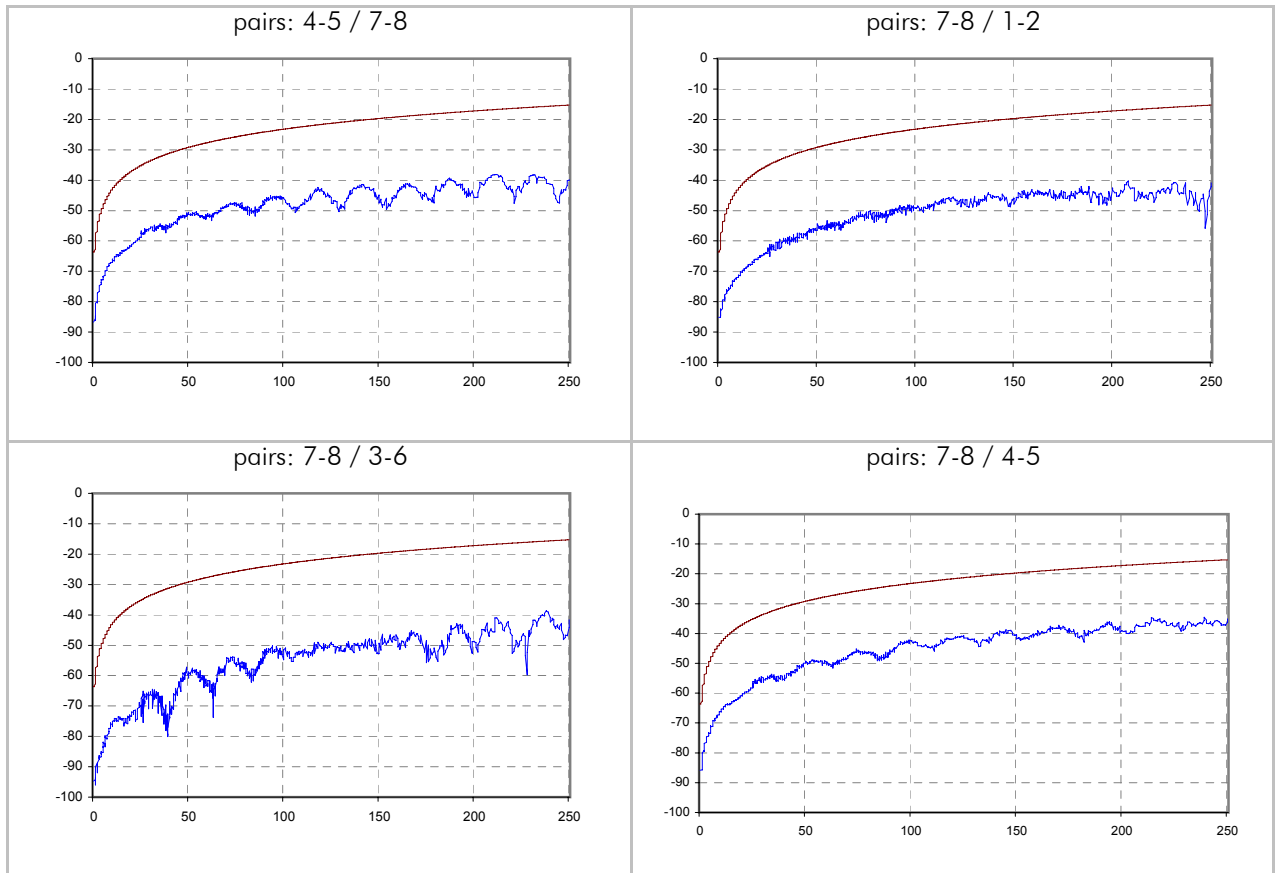
PSNEXT / dB (remote side - type 2 side)



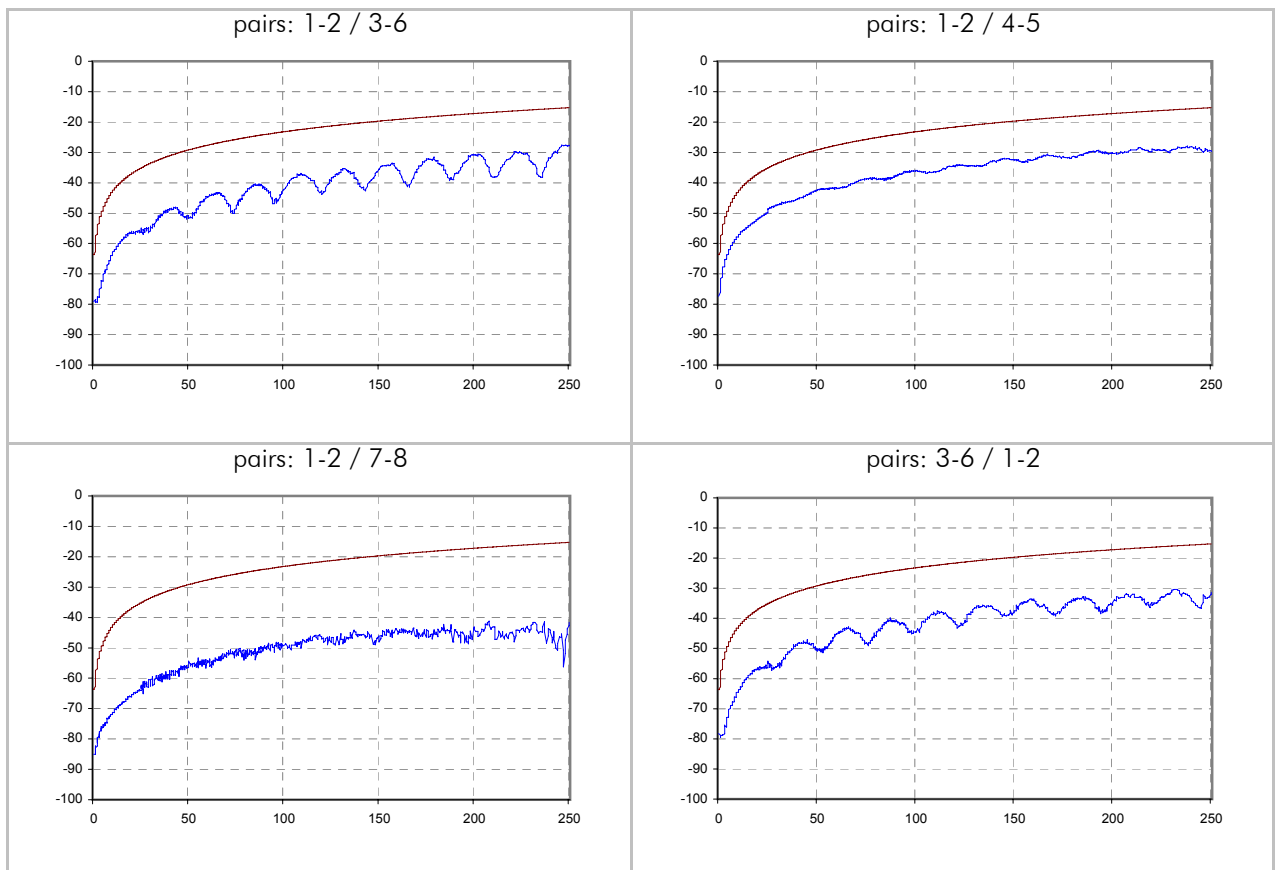
ELFEXT / dB (scanner side - type 1 side)



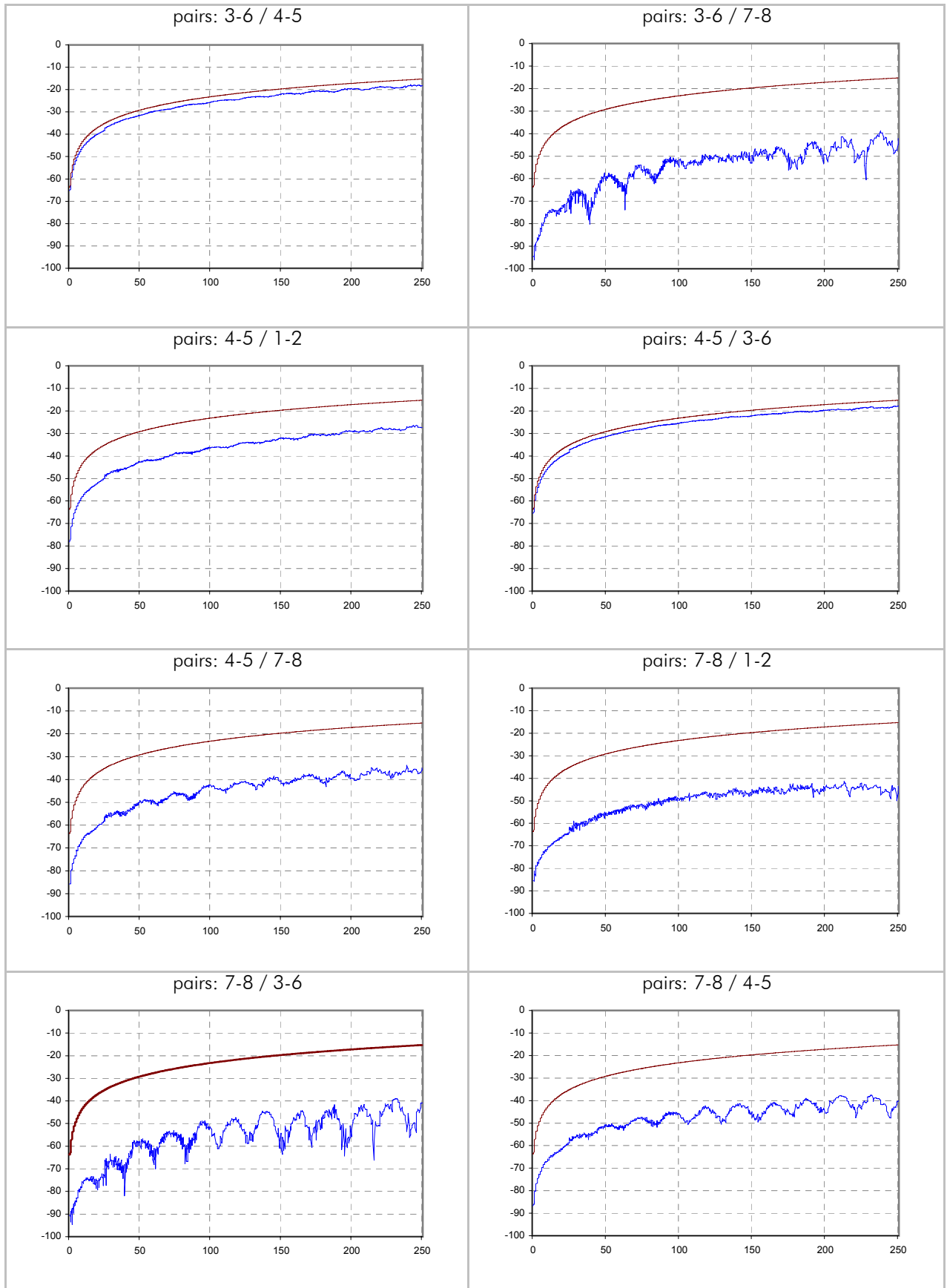
ELFEXT / dB (scanner side - type 1 side)



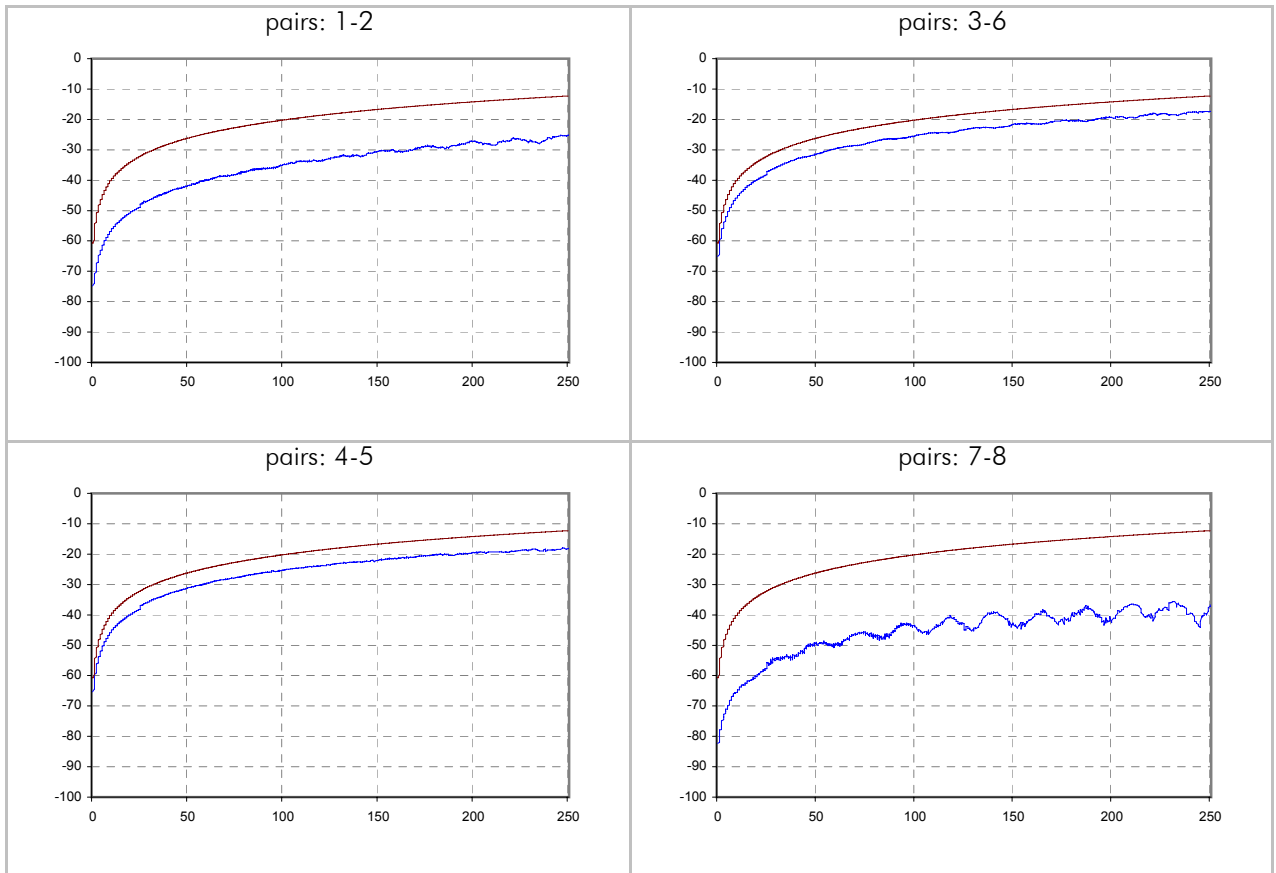
ELFEXT / dB (remote side - type 2 side)



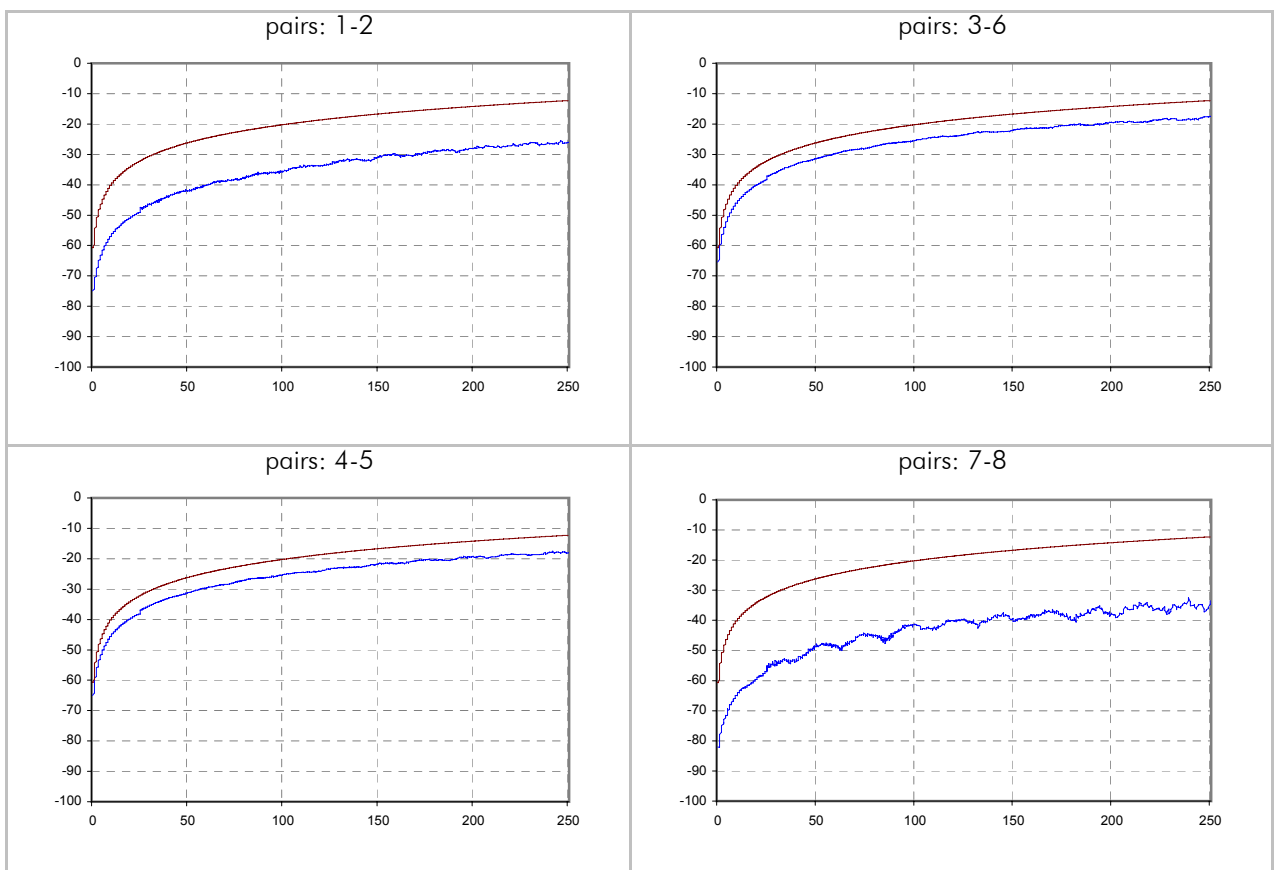
ELFEXT / dB (remote side - type 2 side)



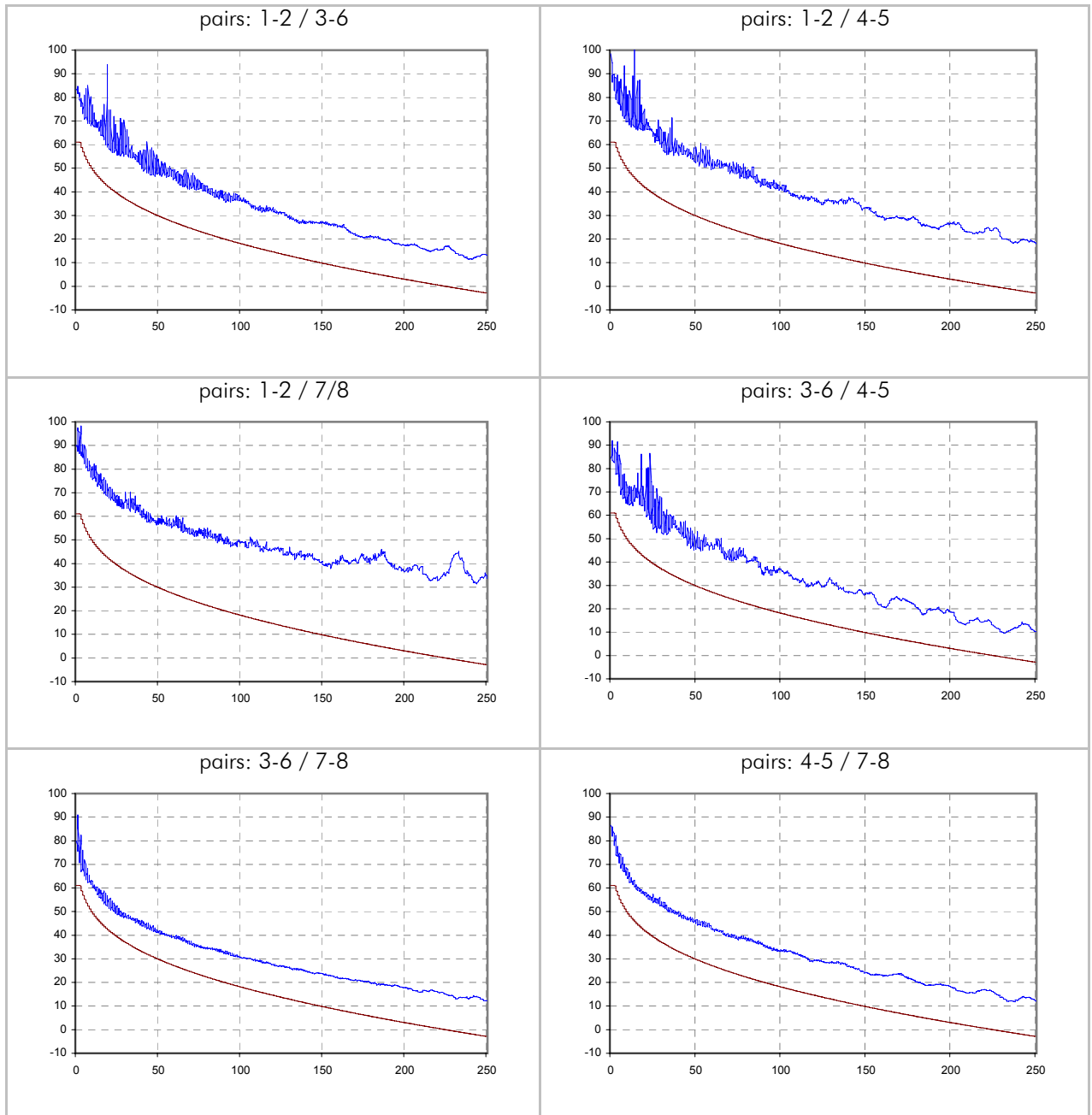
PSELFEXT / dB (scanner side - type 1 side)



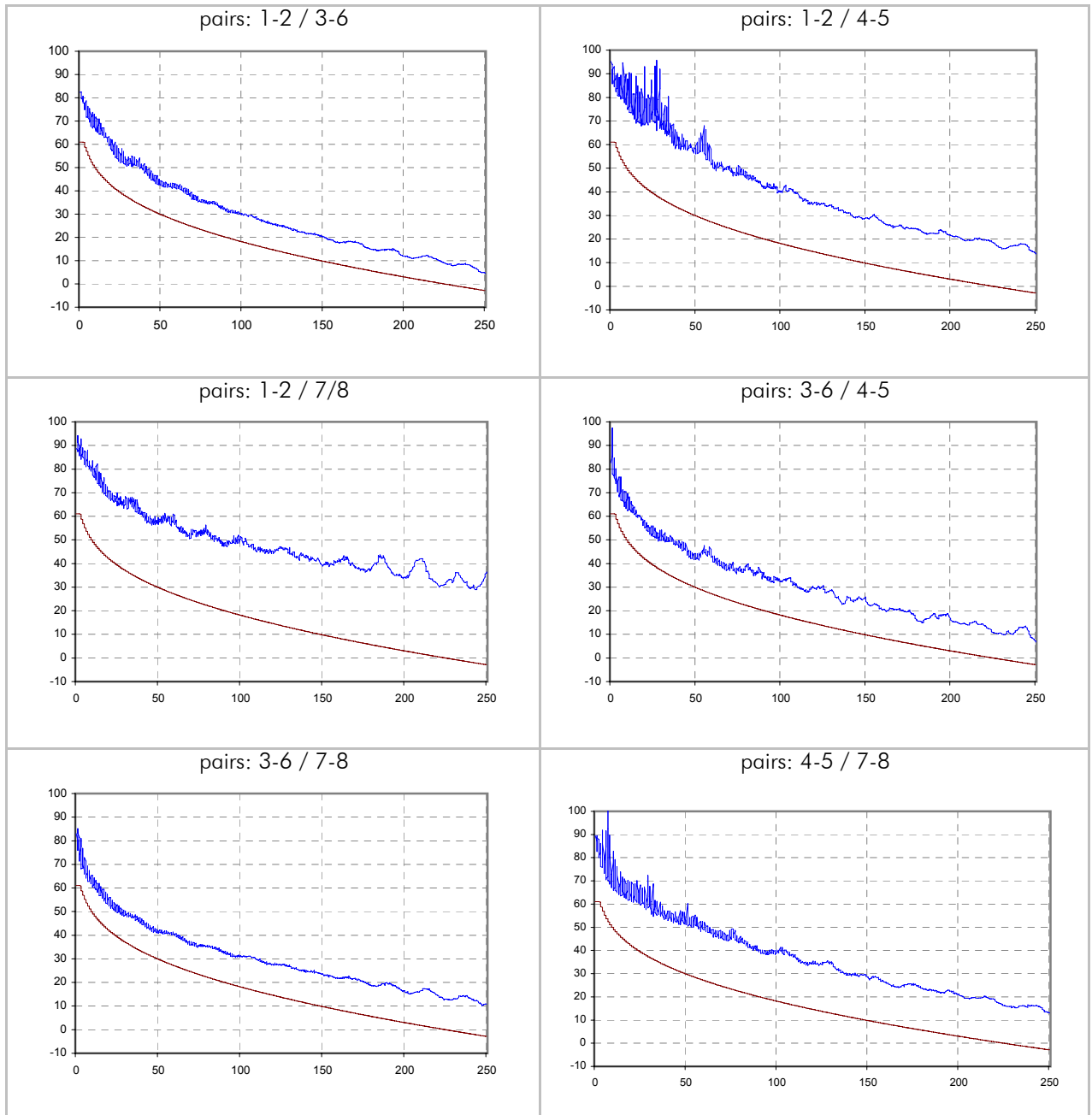
PSELFEXT / dB (remote side - type 2 side)



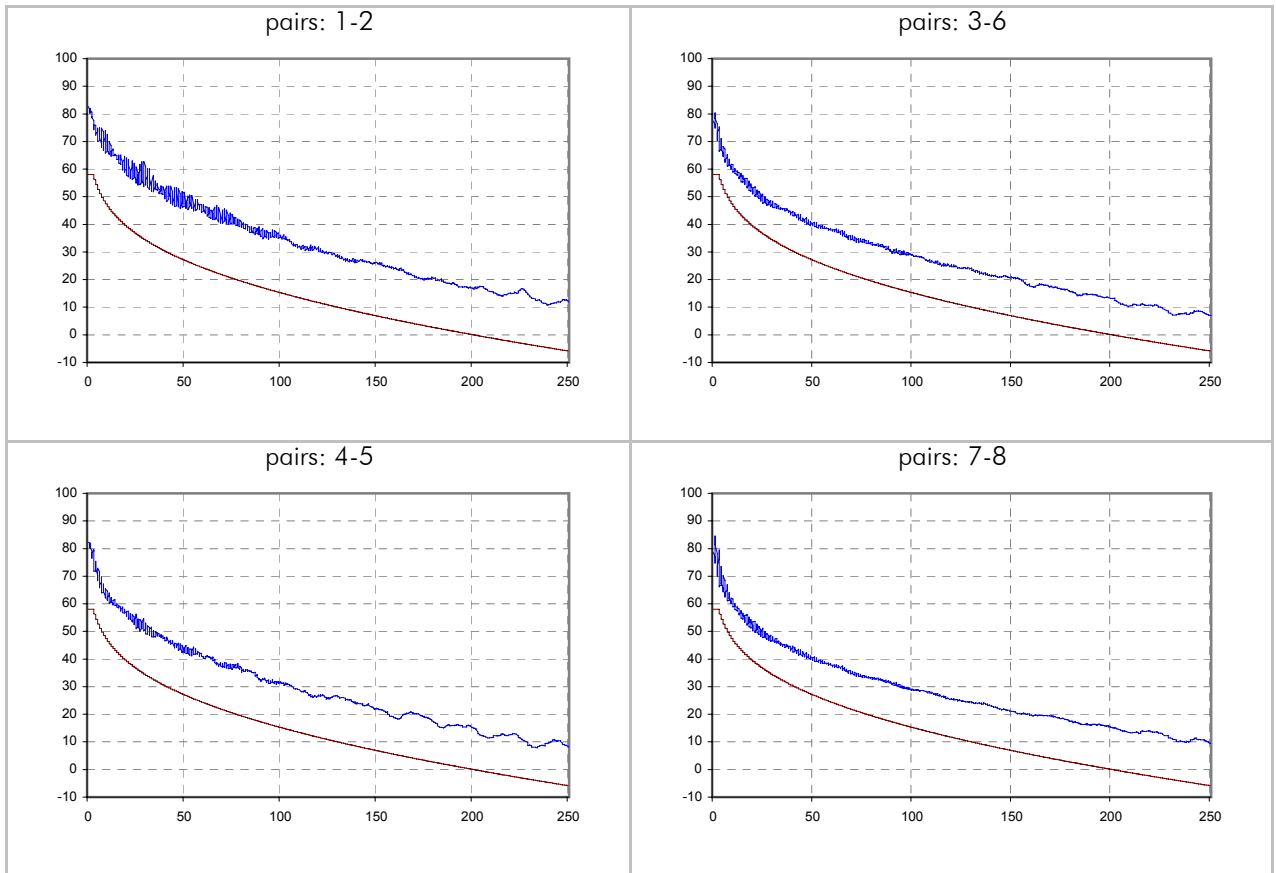
ACR / dB (scanner side - type 1 side)



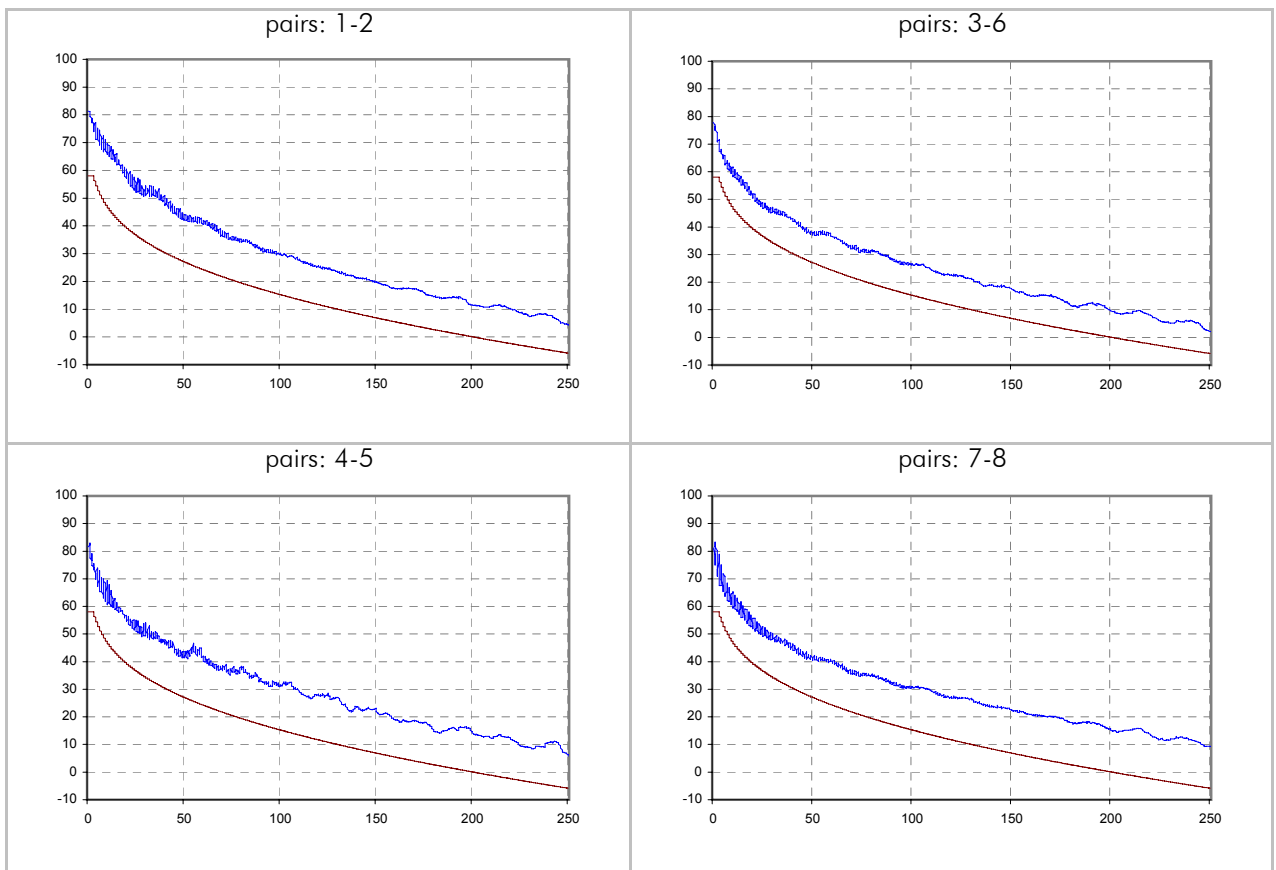
ACR / dB (remote side - type 2 side)



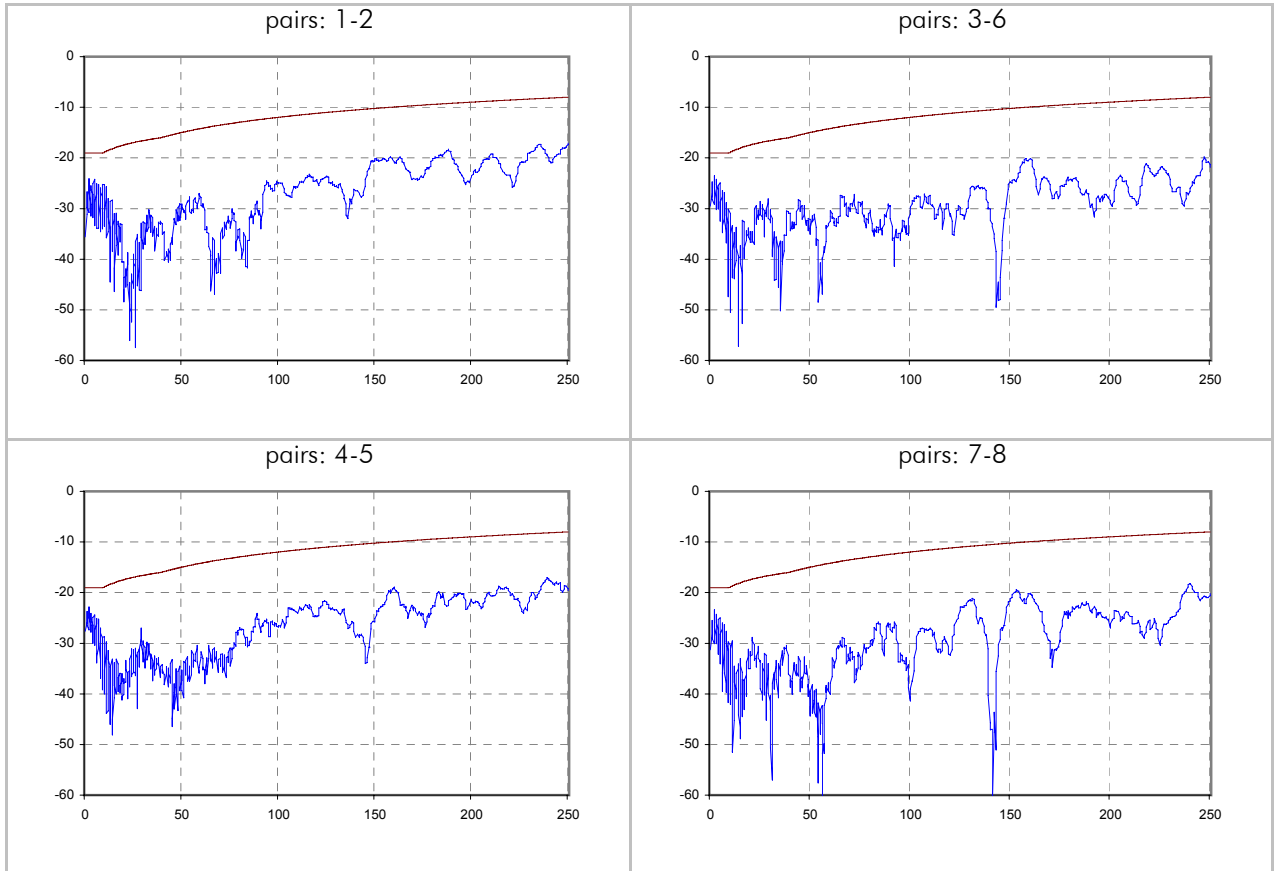
PSACR / dB (scanner side - type 1 side)



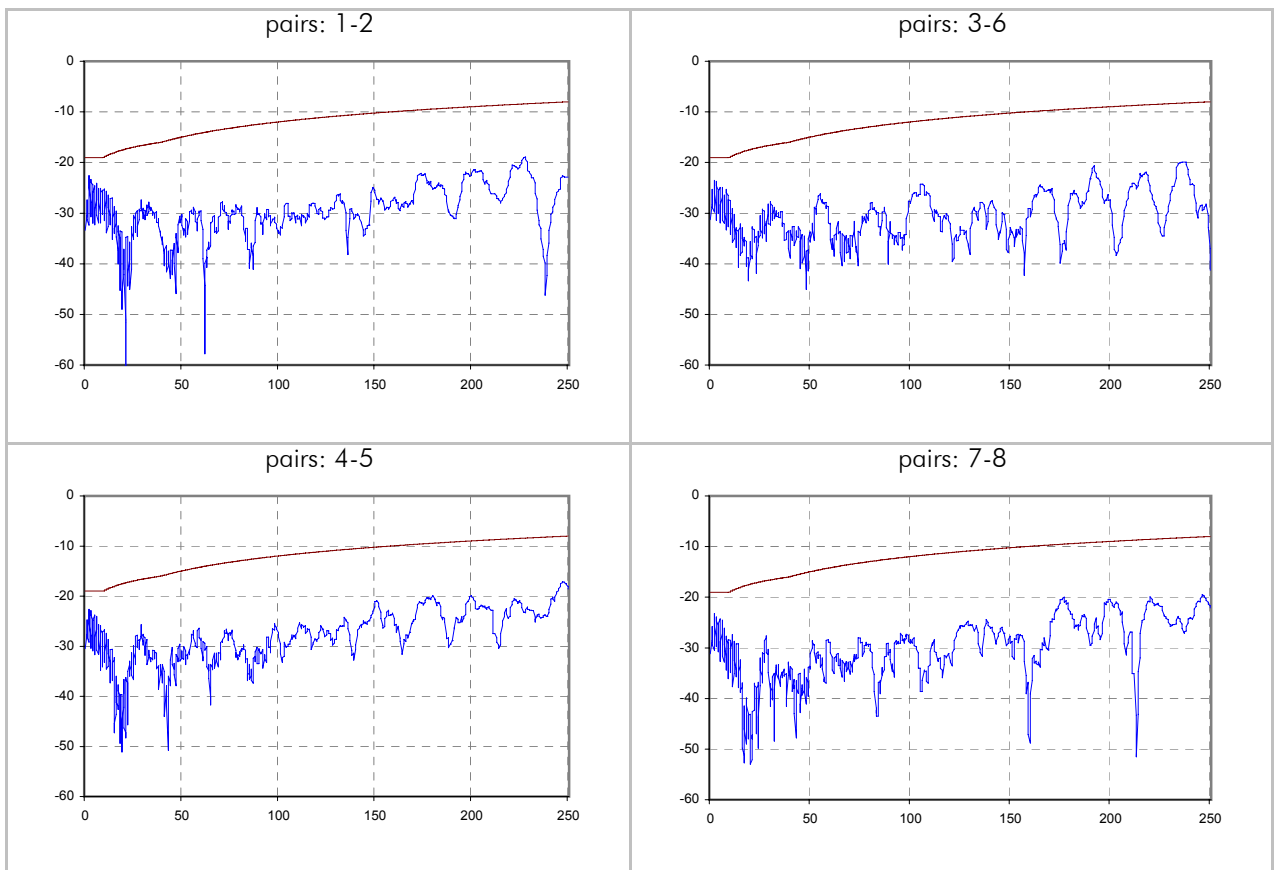
PSACR / dB (remote side - type 2 side)



Return Loss / dB (scanner side - type 1 side)



Return Loss / dB (remote side - type 2 side)



Attenuation / dB

