

with protective caps
mit Transportschutzkappen

Mechanical characteristics
interface dimensions acc. to

Mechanische Eigenschaften
Steckgesicht nach

1.5-3.5; IEC 60169-23 (3.5)

Components
centre contact
spring outer contact
housing
snap ring
other metal parts
insulator

Bauteile
Innenkontakt
Außenkontakt federnd
Gehäuse
Sicherungsring
sonstige Metallteile
Isolierung

Materials / Material
CuBe2Pb
CuBe2Pb
CuZn31Si3P
CuBe2
brass / Messing
PTFE

Finish / Oberfläche
NiP-Au
NiP-Au
NiP-Au
NiP-Au

Electrical characteristics
impedance
frequency
return loss
voltage proof

Elektrische Eigenschaften
Wellenwiderstand
Frequenz
Rückflussdämpfung
Prüfspannung

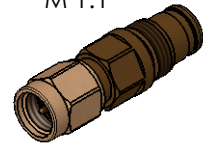
50 Ω
0-6 GHz
typ.: 3 GHz -32 dB; 6 GHz -30 dB
1 kV_{eff}/ 50 Hz



Environmental
operating temp.
RoHS compliant

Umgebung
Betriebstemperatur
RoHS konform

-55°C / +90°C
2011/65/EU

M 1:1



| | | | | | | | | |
|--|----------------------------------|----------------|---------------|--|----------------|----------------------------|---------------------------|--|
| Änd./ rev. index | Änderungs-Nr. / revision code | Datum/ date | Name/ name | gez./ drawn | Datum/ date | Name/ name | Gewicht/ weight [g] | |
| | | | | gez./ drawn | 11.11.2019 | HR | | |
| | | | | gepr./ appr. | 29.11.2019 | GB | ca./approx. 8 | |
| Maßstab/ scale | | | | Benennung/ title | | | |  |
| 2:1 (1:1) | | | | Adaptor 1.5-3.5 - 3.5 (f-m) Adapter 1.5-3.5 - 3.5 (f-m) | | | | |
| untol. Maße/ dim. without tolerances according to | | | | Untert./ doc. type | | Zeichnungsnr./ drawing no. | |  Maße/ dimensions: mm |
| | | | | K | | J01483A0001 | | |
| Ersatz für/ replaces | | | | | | | | Original : DIN A4 |
| | | | | | | | | Blatt/ sheet 1 von/ of 1 |